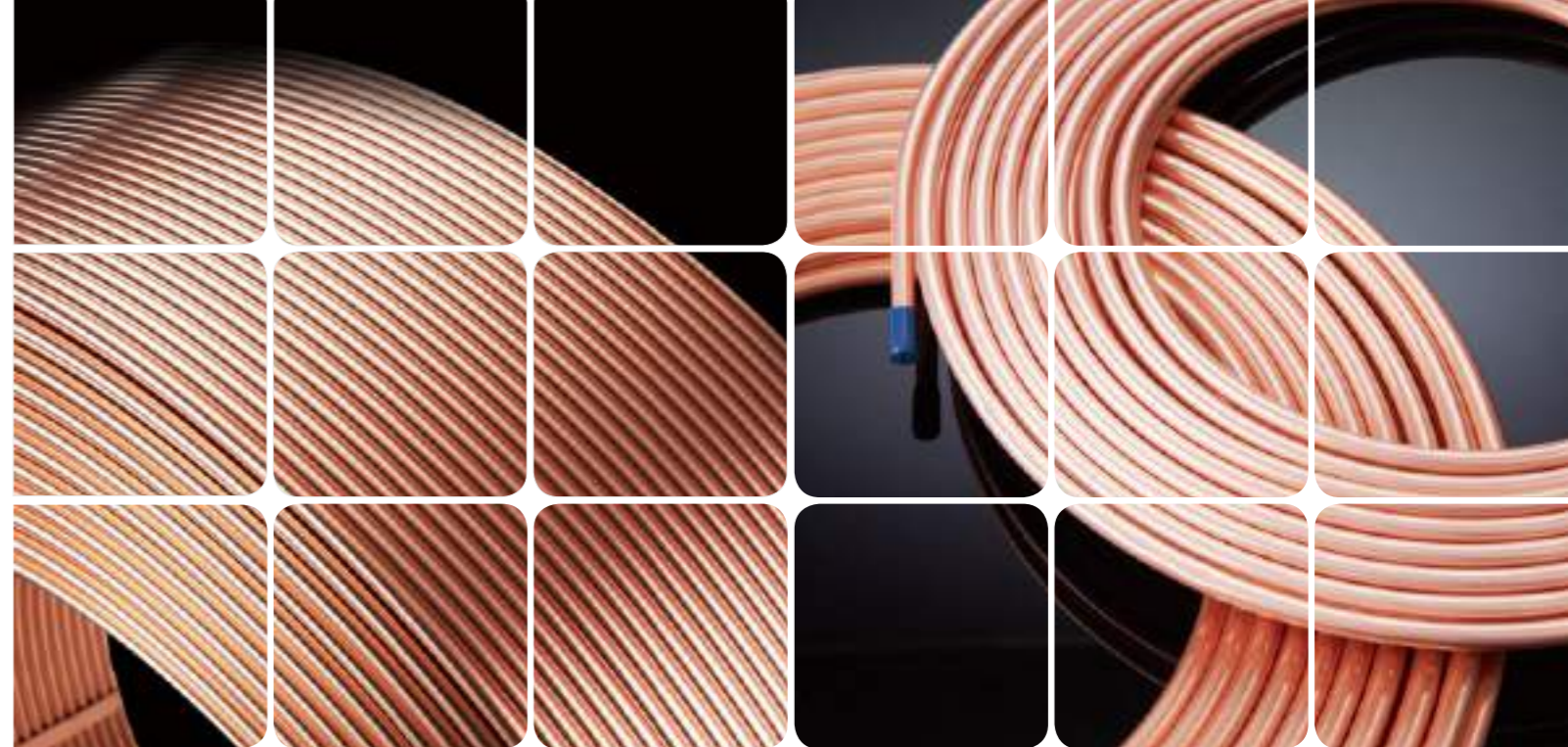


宁波金田铜管有限公司
NINGBO JINTIAN COPPER TUBE CO.,LTD.

地址：中国浙江省宁波市江北区慈城镇城西西路1号
Add: No.1 Chengxi West Road, Cicheng, Ningbo, P. R. China
 邮编/ **P.C.:** 315034
 电话：0574-87567000 (国内) TEL: 86-574-87567880 (Export)
 传真：0574-87574106 (国内) FAX: 86-574-87597573 (Export)
 网址/ **Http:** //www.jtcopper.com www.jtgroup.com.cn
 邮箱/ **E-mail:** jtsales@jtgroup.com.cn

金田铜业（越南）有限公司
JINTIAN COPPER INDUSTRIAL(VIETNAM)COMPANY LIMITED

地址：越南前江省新福县新立1社，龙江工业园区，第110A1, 110B, 110C, 110D地块
Add: Lot 110A1, 110B, 110C, 110D Long Jiang Industrial Park,Tan Lap 1 Commue,Tan Phuoc District,Tien Giang province,Viet Nam
 邮编/ **P.C.:** 860000
 电话/传真：3642900 TEL/FAX: 3642900



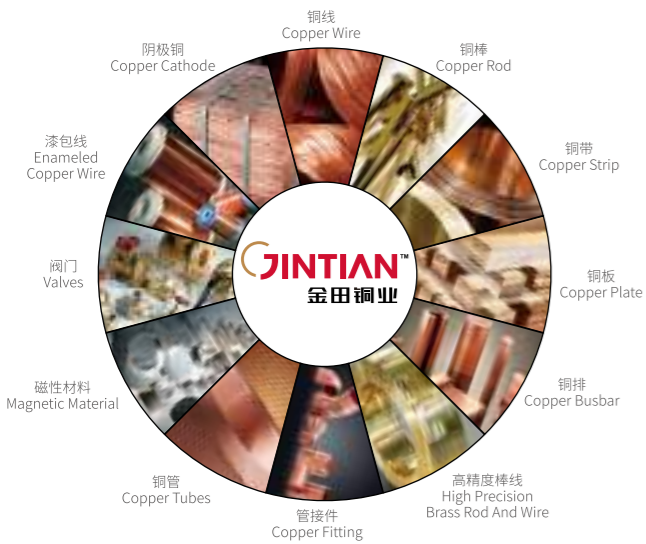
JINTIAN GROUP
THE LEADING COPPER PROCESSING
ENTERPRISE IN CHINA



宁波金田铜管有限公司
NINGBO JINTIAN COPPER TUBE CO.,LTD.
金田铜业（越南）有限公司
JINTIAN COPPER INDUSTRIAL(VIETNAM) CO.,LTD.

GLOBAL MANUFACTURING BASE OF PRECISE COPPER TUBE

全球精密铜管生产基地



宁波金田铜业（集团）股份有限公司（股票代码：601609）始建于1986年10月，历经多年稳健发展，拥有国家级企业技术中心，并成为中国铜加工龙头企业、全国循环经济试点，国家首批“城市矿产”示范基地。

金田铜业占地2000多亩，员工8000多人，涉及产业包括铜加工产业、建筑材料产业、新材料产业及海外产业，下辖二十余家生产型及贸易型分子公司，主要产品有铜线、铜管、铜带、铜排、铜棒、合金铜棒、漆包线、阴极铜、阀门、磁钢等，是目前国内乃至世界产业链最完整的企业之一。

金田铜管事业部隶属于金田铜业，旗下有宁波金田铜管有限公司，江苏兴荣铜业有限公司，金田铜业（越南）有限公司三家子公司，拥有宁波、江苏、越南三大生产基地。该三个生产基地是专业生产各种空调制冷用铜管、环保铜水管及紫铜管接件的国家高新技术公司，主要产品包括内螺纹管、水平复绕盘管、空调直管、水道管、蚊香盘管等系列铜管产品及全系列紫铜管接件。

金田铜管事业部始终坚持“文化引导、制度保证、规范运作”的管理理念，不断夯实管理基础，在行业内率先通过ISO9001、ISO14001、ISO10012、ISO17025、ISO 45001及ASTM、TUV、日本JIS、AS/NZS等体系认证，导入TPM——全员设备维护管理项目，走“工业工程”精益生产之路，引进德国、美国、日本等国家先进的制造和检测设备，拥有多条国际领先的现代化连铸连轧空调管生产线及挤压拉伸生产线，获国家发明专利近二十项，为客户提供质地优良的铜管系列产品。

生产精益化、管理现代化、技术尖端化，面向世界，面向未来，金田铜管事业部将以一流的工艺、一流的设备、一流的人才，一流的服务为导向，不断调整产品结构，提高产品质量，提升服务质量，引领国际潮流，将金田铜管打造成世界知名品牌，成为全球制冷行业最值得信赖的合作伙伴。

National Level High-tech Enterprises
National Level Enterprise Technology Center
National Level Laboratory

国家重点高新技术企业
国家级企业技术中心
国家级实验室

Ningbo Jintian Copper (Group)Co.ltd (Stock Code: 601609) was established in October 1986 and now ,after a sustained and steady development period, With the National Level R&D Centre, Jintian Group has established itself as the Leading Copper Processing Enterprise in China as reference project on "ECO FRIDENLY " and one of the first demonstration base of "City Mineral "

Jintian Group covers an area of 1.55 million square meters, employed over 8000 people, mainly focus on Copper Processing, Building Material, New Materials , and Oversea Industries, It has more than20 manufacturing branches and trading subordinate branches which produce copper cathode, copper and copper alloy wires,,rod, strip,plate ,busbar, enameled wire, copper fitting, valves, magnetic material ,etc. Jintian Group is one of the most comprehensive industrial chains globally

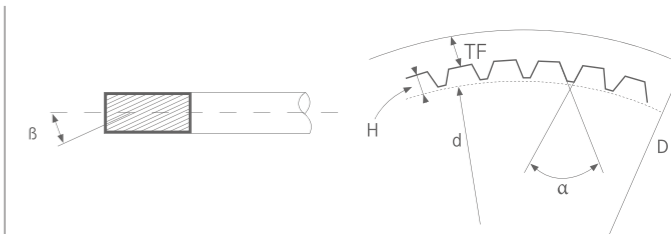
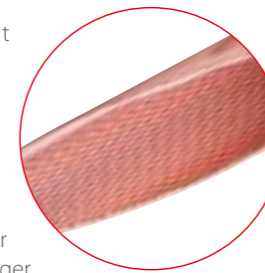
Jintian Copper Tube Division is affiliated to Jintian Group, including Ningbo Jintian Copper Tube Co.,Ltd, Jiangsu Xing Rong Copper Co., Ltd and Jintian Copper (Vietnam) Co.,Ltd, based in Ningbo, Jiangsu Province, and Vietnam. All of the three sites dedicate in tube and fitting manufacturing by ACR & Plumbing application. At present, the main products include Inner Groove Tubes(IGT), Level Wound Coils(LWC), ACR Straight Tubes, Copper Water Tubes, Pancake Coil, etc.

By management philosophy of "Guided by Culture, Guaranteed by System and Operated by Standard", Jintian Copper Tube Division gains ISO9001, ISO14001, ISO10012, ISO17025, ISO 45001, ASTM, TUV, JIS and AS/NZS system certifications. Following the guideline of lean production of "Industrial Engineering", it has introduced a TPM (Total Productive Maintenance) management system and incorporated advanced manufacturing and testing equipment from Germany, USA,Japan, etc. Facilitated state-of-the art continues casting, featuring extrusion, combined drawing, and milling for air-conditioning tubing and has registered almost 20 national patents,it is committed to the production of excellent quality copper tubing.

Based on global vision, embrace the future, Jintian Copper Tube Division will continue to optimize its products and improve its quality, service to supply the international market with up to date production processes, first-class equipment, expertise team, exemplary service levels and the highest quality products, and strive to forge a global brand as the most reliable partner within the HVACR industry.

Note:

Features: High precision of size, great performance of cooling, high-level of cleanliness and light weight, adaptable to the product, trend of thinner wall thickness, smaller diameter and new types of groove.



Applications: Used in air conditioner and refrigeration systems of heat exchanger industry.

注解:

产品特点: 尺寸精度高, 高散热性能, 高清洁度, 轻量化的特点, 适应薄壁、细径、新型齿新产品趋势。

应用领域: 用于空调与制冷系统的热交换器行业。

内螺纹管描述

- 外径 (D)
- 底壁厚 (TF)
- 齿高 (H)
- 齿顶角 (α)
- 螺旋角 (β)
- 齿端内径 (d)

Inner grooved tubes are Defined by

- The outside diameter(D)
- The thickness of the bottom wall(TF)
- The groove depth(H)
- The groove angle(α)
- The helix angle(β)
- The inside diameter(d) at groove tip

内螺纹铜管 / 技术参数

INNER-GROOVED TUBE SPECIFICATIONS(For Reference Only)

Specifications 规格	Unit Weight (g/m) 米克重	O.D 外径	I.D 内径	Bottom Wall Thickness TW 底壁厚	Fin Groove Depth HF 齿高	Total Wall Thickness 总壁厚	Apex Angle 齿顶角	Helix Angle 螺旋角	Number of Tooth 齿数
φ5.00*0.20+0.15-18°	33.2-35.2	5.00	4.30	0.20	0.15	0.35	40	18	40
φ7.00*0.23+0.10-16°	45.5-48.5	7.00	6.34	0.23	0.10	0.33	40	16	65
φ7.00*0.24+0.12-26°	50+1/-2	7.00	6.28	0.24	0.12	0.36	28	26	55
φ7.00*0.22+0.18-15°	51.2-54	7.00	6.20	0.22	0.18	0.40	25	15	60
φ7.00*0.25+0.10-18°	52±2	7.00	6.30	0.25	0.10	0.35	40	18	65
φ7.00*0.24+0.15-30°	49.5-52	7.00	6.22	0.24	0.15	0.39	28	30	54
φ7.00*0.25+0.18-18°	58±2	7.00	6.14	0.25	0.18	0.43	45	18	50
φ7.00*0.27+0.15-18°	61±2	7.00	6.16	0.27	0.15	0.42	53	18	60
φ7.00*0.28+0.15-18°	63±2	7.00	6.14	0.28	0.15	0.43	40	18	60
φ7.94*0.28+0.16-18°	73±2	7.94	7.06	0.28	0.16	0.44	53	18	60
φ7.94*0.26+0.17-18°	65±2	7.94	7.08	0.26	0.17	0.43	40	18	50
φ7.94*0.24+0.13-18°	62±2	7.94	7.20	0.24	0.13	0.37	33	18	70
φ7.94*0.26+0.10-18°	62±2	7.94	7.22	0.26	0.10	0.36	50	18	60
φ9.52*0.24+0.12-18°	68±2	9.52	8.80	0.24	0.12	0.36	53	18	65
φ9.52*0.27+0.15-30°	78.5±2	9.52	8.68	0.27	0.15	0.42	30	18	55
φ9.52*0.27+0.16-18°	82±2	9.52	8.66	0.27	0.16	0.43	45	18	60
φ9.52*0.30+0.18--16°	87±2	9.52	8.56	0.30	0.18	0.48	30	16	60
φ9.52*0.28+0.12-15°	80±2	9.52	8.72	0.28	0.12	0.40	53	15	65
φ9.52*0.28+0.15-18°	85±2	9.52	8.66	0.28	0.15	0.43	53	18	60
φ9.52*0.35+0.15-18°	104±2	9.52	8.52	0.35	0.15	0.50	53	18	60
φ9.52*0.30+0.17-18°	87±2	9.52	8.58	0.30	0.17	0.47	25	18	70
φ9.52*0.30+0.20-18°	93±2	9.52	8.52	0.30	0.20	0.50	53	18	60
φ9.52*0.28+0.20-18°	88±2	9.52	8.56	0.28	0.20	0.48	53	18	60
φ9.52*0.32+0.20-18°	93±2	9.52	8.48	0.32	0.20	0.52	20	18	50
φ9.52*0.33+0.20-18°	96-101	9.52	8.46	0.33	0.20	0.53	53	15.5	60
φ9.52*0.40+0.20-18°	119±3	9.52	8.32	0.40	0.20	0.60	53	18	60
φ9.52*0.62+0.15-18°	164±3	9.52	8.02	0.62	0.15	0.75	42	18	60
φ12.7*0.35+0.20-18°	140±3	12.70	11.60	0.35	0.20	0.55	53	18	65

备注: 产品执行标准 GB/T 20928、JIS H3300

Remark: Executive Standard of the product: GB/T 20928, JIS H3300

内螺纹铜管 INNER-GROOVED TUBE



水平复绕盘管
LEVEL WOUND COIL

卷重: 60-220kg
 Roll weight: 60-220kg



大散盘管
JUMBO COIL

卷重: 400-1000kg
 Roll weight: 400-1000kg

Note:

Features: Clean surface of internal and external, evenly structured, high precision of size, easy to weld, good formability.

Applications: Used in air conditioner, heat exchanger of refrigeration industry and pipeline system connection.

注解:

产品特点: 内外表面清洁、光亮, 组织均匀致密, 尺寸精度高, 易焊接、加工成型性好。

应用领域: 用于空调与制冷行业的热交换器及管路系统连接。

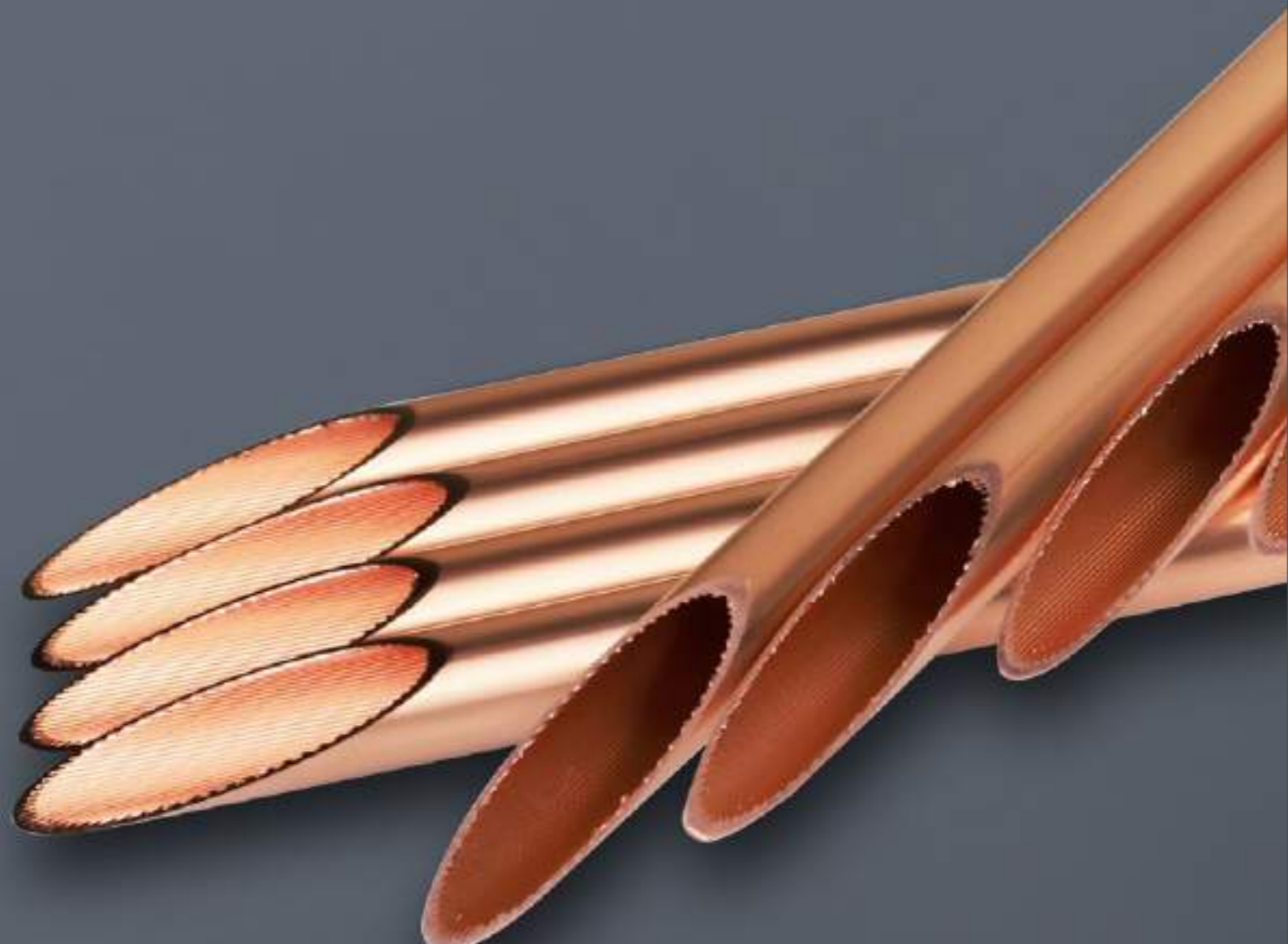


技术参数

SPECIFICATIONS(For Reference Only)

Thickness O.D	0.25 mm	0.28 mm	0.30 mm	0.35 mm	0.40 mm	0.46 mm	0.56 mm	0.60 mm	0.64 mm	0.71 mm	0.76 mm	0.81 mm	0.89 mm	1.00 mm	1.07 mm	1.14 mm	1.22 mm	1.27 mm	1.50 mm	2.00 mm
3.80		○	○	○	○	○	○	○												
4.00		○	○	○	○	○	○	○	○	○										
4.76(3/16in)		○	○	○	○	○	○	○	○	○	○	○								
5.00	○	○	○	○	○	○	○	○	○	○	○	○	○							
6.00	○	○	○	○	○	○	○	○	○	○	○	○	○	○						
6.35(1/4in)	○	○	○	○	○	○	○	○	○	○	○	○	○	○	○					
7.00	○	○	○	○	○	○	○	○	○	○	○	○	○	○	○	○	○	○	○	○
7.94(5/16in)		○	○	○	○	○	○	○	○	○	○	○	○	○	○	○	○	○	○	○
8.00		○	○	○	○	○	○	○	○	○	○	○	○	○	○	○	○	○	○	○
9.00		○	○	○	○	○	○	○	○	○	○	○	○	○	○	○	○	○	○	○
9.52(3/8in)		○	○	○	○	○	○	○	○	○	○	○	○	○	○	○	○	○	○	○
10.00			○	○	○	○	○	○	○	○	○	○	○	○	○	○	○	○	○	○
12.00			○	○	○	○	○	○	○	○	○	○	○	○	○	○	○	○	○	○
12.70(1/2in)				○	○	○	○	○	○	○	○	○	○	○	○	○	○	○	○	○
14.00					○	○	○	○	○	○	○	○	○	○	○	○	○	○	○	○
15.00						○	○	○	○	○	○	○	○	○	○	○	○	○	○	○
15.88(5/8in)							○	○	○	○	○	○	○	○	○	○	○	○	○	○
16.00								○	○	○	○	○	○	○	○	○	○	○	○	○
18.00									○	○	○	○	○	○	○	○	○	○	○	○
19.05(3/4in)										○	○	○	○	○	○	○	○	○	○	○
20.00											○	○	○	○	○	○	○	○	○	○
22.00												○	○	○	○	○	○	○	○	○
22.23(7/8in)													○	○	○	○	○	○	○	○

备注: 产品执行标准 GB/T 17791、ASTM B280、JIS H3300、AS/NZS 1571、AS1432、EN12735
 Remark: Executive Standard of the product: GB/T 17791, ASTM B280, JIS H3300, AS/NZS 1571, AS1432, EN12735



无氧铜管

OXYGEN-FREE COPPER TUBE

Note:

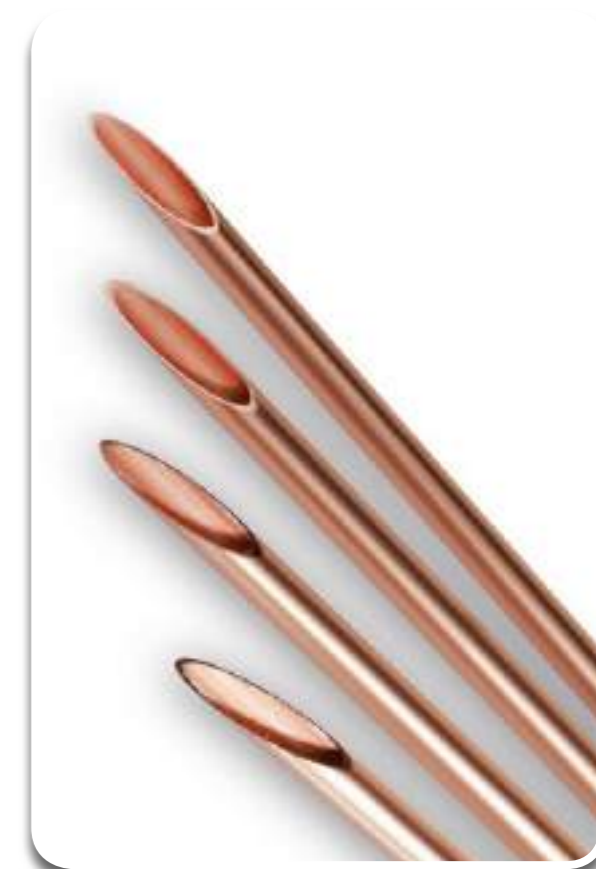
Features: features: clean internal and outside surface, highly precise specification, high electrical and thermal conductivity, excellent processability and weldability, good corrosion resistance performance and low-temperature performance.

Applications: Electric and electronic radiator (CPU, Compute: Mobile phone, 5G base station, new energy automobile etc.), AC Heat exchanger, magnetron and electrical power system.

注解:

产品特点: 内外表面清洁, 尺寸精度高, 导电和导热性能高, 加工性能和焊接性能、耐蚀性能和低温性能好。

应用领域: 电器及电子散热 (CPU、电脑、手机、5G 基站、新能源汽车等)、空调与制冷系统的热交换行业、磁控管、电力行业。



无氧铜管 / 技术参数

OXYGEN-FREE COPPER TUBE SPECIFICATIONS (For Reference Only)

Item / Sub item 项目/分项	Alloy 牌号	Outer Diameter 外径mm	Bottom Wall Thickness Tw 底壁厚 mm	Fin Groove Depth HF 齿高mm	Top Angle 齿顶角	Helix Angle 螺旋角	Groove Number 齿条数
Heat Tubes 热管	Mobile phone Tube 手机管	TU0	1.50~10.00	0.06~0.12	-	-	-
	Computer Tube 电脑管	TU0	3.00~12.00	0.10~0.60	-	-	-
	Grooved Tube 沟槽管	TU0	4.00~12.70	0.15~0.30	0.10~0.30	5-15	0
Magnetron Tube 磁控管	TU0	10.00~50.00	0.50~2.50	-	-	-	-
Refrigeration Inner Grooved Tube 制冷内螺纹管	TU1	4.00~12.70	0.15~0.40	0.10~0.30	5~40	3~45	30~90
Electric Power Tube 电力用管	TU0/TU1/TU2	8.00~40.00	0.30~1.80	-	-	-	-

备注: 产品执行标准 GB/T 26302、ASTM B280、JIS H3300、EN12735

Remark: Executive Standard of the product: GB/T 26302, ASTM B280, JIS H3300, EN12735



Note:

Features: Clean surface of internal and external, bright finish, high precision of size, single, double or multi-layer pancake shape, easy to transport, process and install.

Applications: Air conditioner, refrigeration industry, pipeline system connection, installation and maintenance.

注解:

产品特点：内外表面清洁、光亮，尺寸精度高，单层、双层或多层蚊香状盘绕，便于运输及加工安装。

应用领域：空调与制冷行业管路连接及维修安装。

蚊香盘管 / 技术参数

PANCAKE COIL SPECIFICATIONS (For Reference Only)

Thickness	0.30 mm	0.35 mm	0.40 mm	0.45 mm	0.50 mm	0.55 mm	0.60 mm	0.65 mm	0.70 mm	0.75 mm	0.80 mm	1.00 mm	1.20 mm	1.50 mm
O.D														
4.00			⊙	⊙	⊙									
4.76(3/16in)		⊙	⊙	⊙	⊙	⊙	⊙	⊙	⊙	⊙	⊙	⊙		
6.00		⊙	⊙	⊙	⊙	⊙	⊙	⊙	⊙	⊙	⊙	⊙		
6.35(1/4in)		⊙	⊙	⊙	⊙	⊙	⊙	⊙	⊙	⊙	⊙	⊙	⊙	
7.94(5/16in)	⊙	⊙	⊙	⊙	⊙	⊙	⊙	⊙	⊙	⊙	⊙	⊙	⊙	
8.00	⊙	⊙	⊙	⊙	⊙	⊙	⊙	⊙	⊙	⊙	⊙	⊙	⊙	
9.52(3/8in)	⊙	⊙	⊙	⊙	⊙	⊙	⊙	⊙	⊙	⊙	⊙	⊙	⊙	⊙
12.00		⊙	⊙	⊙	⊙	⊙	⊙	⊙	⊙	⊙	⊙	⊙	⊙	⊙
12.70(1/2in)		⊙	⊙	⊙	⊙	⊙	⊙	⊙	⊙	⊙	⊙	⊙	⊙	⊙
14.00			⊙	⊙	⊙	⊙	⊙	⊙	⊙	⊙	⊙	⊙	⊙	⊙
15.00			⊙	⊙	⊙	⊙	⊙	⊙	⊙	⊙	⊙	⊙	⊙	⊙
15.88(5/8in)			⊙	⊙	⊙	⊙	⊙	⊙	⊙	⊙	⊙	⊙	⊙	⊙
16.00					⊙	⊙	⊙	⊙	⊙	⊙	⊙	⊙	⊙	⊙
19.05(3/4in)							⊙	⊙	⊙	⊙	⊙	⊙	⊙	⊙
22.23(7/8in)									⊙	⊙	⊙	⊙	⊙	⊙

备注：产品执行标准 GB/T 17791、ASTM B280、JIS H3300、AS/NZS 1571、AS1432、EN12735

Remark: Executive Standard of the product: GB/T 17791, ASTM B280, JIS H3300, AS/NZS 1571, AS1432, EN12735

蚊香盘管
PANCAKE COIL



空调直管 AIR CONDITIONING STRAIGHT TUBE

Note:

Features: Clean surface of internal and external, high precision of size, easy to weld and process.

Applications: Air conditioner, heat exchanger of refrigeration industry and pipeline system connection.

注解:

产品特点: 内外表面清洁, 尺寸精度高, 易焊接、加工。

应用领域: 用于空调与制冷行业的热交换器及管路系统连接。

技术参数

SPECIFICATIONS(For Reference Only)

O.D	Thickness	0.30	0.35	0.40	0.45	0.50	0.55	0.60	0.65	0.70	0.75	0.80	1.00	1.20	1.50	
		mm	mm	mm	mm	mm	mm	mm	mm	mm	mm	mm	mm	mm	mm	mm
4.76(3/16in)		○	○	○	○	○	○	○	○	○	○	○	○	○	○	○
6.00		○	○	○	○	○	○	○	○	○	○	○	○	○	○	○
6.35(1/4in)		○	○	○	○	○	○	○	○	○	○	○	○	○	○	○
7.00		○	○	○	○	○	○	○	○	○	○	○	○	○	○	○
7.94(5/16in)		○	○	○	○	○	○	○	○	○	○	○	○	○	○	○
8.00		○	○	○	○	○	○	○	○	○	○	○	○	○	○	○
9.52(3/8in)		○	○	○	○	○	○	○	○	○	○	○	○	○	○	○
10.00		○	○	○	○	○	○	○	○	○	○	○	○	○	○	○
12.00		○	○	○	○	○	○	○	○	○	○	○	○	○	○	○
12.70(1/2in)		○	○	○	○	○	○	○	○	○	○	○	○	○	○	○
14.00		○	○	○	○	○	○	○	○	○	○	○	○	○	○	○
15.00		○	○	○	○	○	○	○	○	○	○	○	○	○	○	○
15.88(5/8in)		○	○	○	○	○	○	○	○	○	○	○	○	○	○	○
16.00		○	○	○	○	○	○	○	○	○	○	○	○	○	○	○
19.05(3/4in)		○	○	○	○	○	○	○	○	○	○	○	○	○	○	○
22.22(7/8in)		○	○	○	○	○	○	○	○	○	○	○	○	○	○	○
25.4(1in)		○	○	○	○	○	○	○	○	○	○	○	○	○	○	○
28.57(1-1/8in)		○	○	○	○	○	○	○	○	○	○	○	○	○	○	○

备注: 产品执行标准 GB/T 17791、ASTM B280、JIS H 3300、ASTM B88、AS/NZS 1571、AS1432、EN12735

Remark: Executive Standard of the product: GB/T 17791, ASTM B280, JIS H 3300, ASTM B88, AS/NZS 1571, AS1432, EN12735

E-mail: jtsales@jtgroup.com.cn

铜水管 COPPER WATER TUBE

Note:

Features: Clean surface of internal and external, higher pressure resistant, more sanitary and healthier than other traditional water tubes.

Applications: The best choice for the supply of water, gas and heating piping system. Widely used in hot and cold water supply and drainage for building, drinking water, gas, treatment, food and chemical industry.

注解:

产品特点: 内表清洁光滑, 耐高温、高压, 卫生健康, 经久耐用, 相比其他传统水管有更强的优势。

应用领域: 是供水、供气、供暖管道系统的最佳选择, 广泛应用于建筑冷、热给排水、直饮水、燃气、医疗、食品、化工等领域。

技术参数

SPECIFICATIONS(For Reference Only)

公称 通径 DN (Inch)	公称 外径 O.D. (mm)	壁厚/mm			最大工作压力p/(N/mm ²)										
		K型	L型	M型	硬态(Y)Hard			半硬态(Y2)Half Hard			软态(M)Anneal Hard				
					K型	L型	M型	K型	L型	M型	K型	L型	M型		
1/4	9.52	0.89	0.76		1.73	10.75		10.1	8.53		8.33	7.03			
3/8	12.7	1.24	0.89	0.64	13.34	9.35	6.56	10.59	7.42	5.21	6.12	6.12	4.29		
1/2	15.88	1.24	1.02	0.71	10.49	8.53	5.84	8.33	6.77	4.64	5.58	5.58	3.82		
5/8	19.05	1.24	1.07		8.65	7.41		6.87	5.88		4.85	4.85			
3/4	22.23	1.65	1.14	0.81	9.94	6.74	4.73	7.89	5.35	3.75	4.41	4.41	3.09		
1	28.58	1.65	1.27	0.89	7.63	5.81	4.02	6.05	4.61	3.19	3.8	3.8	2.63		
1 1/4	34.93	1.65	1.4	1.07	6.19	5.22	3.96	4.91	4.14	3.14	3.41	3.41	2.59		
1 1/2	41.28	1.83	1.52	1.24	5.79	4.78	3.88	4.6	3.79	3.08	3.13	3.13	2.54		
2	53.98	2.11	1.78	1.47	5.08	4.27	3.51	4.04	3.39	2.78	2.79	2.79	2.29		
2 1/2	66.68	2.41	2.03	1.65	4.69	3.93	3.18	3.72	3.12	2.52	2.57	2.57	2.08		
3	79.38	2.77	2.29	1.83	4.52	3.72	2.96	3.59	2.95	2.35	2.43	2.43	1.94		
3 1/2	92.08	3.05	2.54	2.11	4.29	3.55	2.94	3.4	2.82	2.33	2.32	2.32	1.92		
4	104.78	3.4	2.79	2.41	4.2	3.43	2.95	3.33	2.72	2.34	2.24	2.24	1.93		
5	130.18	4.06	3.18	2.77	4.03	3.14	2.73	3.2	2.49	2.16	2.05	2.05	1.78		
6	155.58	4.87	3.56	3.1	4.05	2.94	2.55	3.21	2.33	2.02	1.92	1.92	1.67		
8	206.38	6.88	5.08	4.32	4.32	3.16	2.68	3.42	2.51	2.13	2.07	2.07	1.75		
10	257.18	8.59	6.35	5.38	4.32	3.17	2.68	3.43	2.52	2.13	2.08	2.08	1.75		
12	307.98	10.29	7.11	6.45	4.33	2.96	2.68	3.43	2.35	2.13	1.94	1.94	1.76		

备注: 产品执行标准 GB/T18033、ASTM B88、EN1057、AS1432

Remark: Executive Standard of the product: GB/T18033, ASTM B88, EN1057, AS1432

注解:

1. 我们接受客户定制标准 (长度上限 50 米)
2. 接受特殊外径和壁厚的订单
3. 接受黑色橡胶材料保温层
4. 管子两端可覆盖纳子

Note:

- 1) Customized length is accepted(Max.length=50m)
- 2) Customized O.D. and thickness are accepted
- 3) Insulated tube can be made with black rubber material
- 4) The two ends of tubes can be covered with copper nuts

被覆铜管 / 技术参数

INSULATED COPPER TUBE SPECIFICATIONS

Item 项目	Unit 单位	Insulated Material 保温材料		
		B	C	D
Average density 平均密度	G/cm ²	0.028~0.038	0.025~0.044	0.023~0.038
Extensibility 延展性	kg/cm ²	Above 2.5	Above 2.5	Above 2.0
Max.temperature 最高温度	C	80	100	120
Water absorbability 吸水性	mg/cm ²		Below 0.1	
Heat transfer variable 传热变量	kcl/mxhxc		Below 0.037	
Contract of thickness 收缩厚度	%		Below 7	
Fire Resistance Test 耐火测试	UL-04		Pass	

Specification 规格	Copper Tube Outer diameter×thickness(mm) 铜管外径×壁厚(mm)	Insulated Tube Inner diameter×thickness(mm) 覆塑管内径×壁厚(mm)	Suitable for 适用于	Length(m) 长度 (米)
1/4	6.35×0.75	∅8(±0.5)×8(EMPAISTIC)	Centralized air conditioner 空调制冷行业	1~30
3/8	9.52×0.8	∅12(±0.5)×8(EMPAISTIC)		1~30
1/2	12.70×0.8	∅14(±0.5)×8(EMPAISTIC)		1~30
5/8	15.88×1.0	∅18(±0.5)×9(EMPAISTIC)		1~30
3/4	19.05×1.0	∅22(±1)×9(EMPAISTIC)		1~30
7/8	22.22×1.2	∅25(±1)×10(EMPAISTIC)		1~30
1	25.40×1.2	∅28(±1)×10(EMPAISTIC)		1~30
1-1/8	28.58×1.2	∅32(±1)×10(EM PAISTIC)		1~30
1-1/4	31.75×1.5	∅35(±1)×10(EMPAISTIC)		1~30
1-1/2	38.10×1.5	∅42(±1)×10(EMPAISTIC)		1~30

Specification 规格	Copper Tube Outer diameter×thickness(mm) d2×t2/d1×t1 铜管外径×壁厚(mm)	Insulated Tube Inner diameter (mm) 覆塑管内径(mm)	Suitable for 适用于	Length(m) 长度 (米)
1/4×3/8	6.35×0.75/9.52×0.8	∅8(±0.5)/∅12(±0.5)	1HP	1~30
1/4×1/2	6.35×0.8/12.70×0.8	∅8(±0.5)/∅14(±0.5)	1.5HP	1~30
1/4×5/8	6.35×0.8/15.88×1.0	∅8(±0.5)/∅18(±0.5)	2HP	1~20
3/8×5/8	9.52×0.8/15.88×1.0	∅12(±0.5)/∅18(±0.5)	3HP	1~20
3/8×3/4	9.52×0.8/19.05×1.0	∅12(±0.5)/∅22(±1)	4HP	1~15
1/2×3/4	12.7×0.8/19.05×1.0	∅14(±0.5)/∅22(±1)	5HP	1~15

注意: 上述是公司生产常规规格, 任何特殊规格可根据订单特殊定制。

Remark: These are common sizes which the company is making, Any unusual sizes with special requirement can be tailor-made against order.

E-mail: jtsales@jtgroup.com.cn



ASME B 16.22 管接头 COPPER FITTING

Coupling Rolled Stop CxC
Size: 1/4-4

Coupling Reducing CxC
Size: 1/4x3/8-4x3

Cap
Size: 1/4-4

90°Elbow Short Radius CxC
Size: 1/4-4

90°Elbow Short Radius - Street FTGxC Elbow
Size:1/4-4

45°Elbow CxC
Size: 1/4-4

45°Elbow - Street CxC
Size: 1/4-4

Tee CxCxC
Size: 1/4-4

Fitting Reducer FTGxC
Size: 1/4x3/8-4x3

Adapter - Male CxMPT
Size: 1/4-4

Adapter - Female FTGxFPT
Size: 1/4-4

90°Elbow Long Radius CxC
Size: 1/4-4

Coupling Dimple Tube Stop
Size:1/4-4

Coupling No Stop
Size: 1/4-4

Copper Tube Strap Two-hole
Size: 3/8-2

Copper Crimp Ring
Size: 3/8-1 1/2

90°Elbow Long Radius - Street CxC
Size: 1/4-4

P-Trap CxC
Size: 1/2-2

U Bend CxC
Size: 1/4-2

Adapter - Female CxFPT
Size: 3/8-2 1/2

Adapter - Male FTGXMPT
Size: 3/8*2 1/2

Union CxC
Size: 3/8-3

Tee Reducing CxCxC
Size: 1/4x1/4x1/8-4x3x3

EN1254-1

Elbow 90°CxC
Size: 6mm-108mm

Obtuse Elbow 45°CxC
Size: 6mm-108mm

Reducer Coupler CxC
Size: 10x6mm-108x89mm

Coupler
Size: 6mm-108mm

Equal Tee
Size: 6mm-108mm

Reducing Tee
Size: 8x8x6mm-108x67x108mm

90°Bend FTGxC
Size: 6mm-108mm

U-bend CxC
Size: 10mm-54mm

Stop End
Size: 6mm-108mm

Full Crossover
Size: 12mm-22mm

Male Coupler
Size: 12mmx3/8"-76mmx3"

Female Coupler
Size: 12mmx3/8"-54mmx2"

Bent Tap Connector
Size: 3/8" x12mm-1" x28mm

Straight Tap Connector
Size: 3/8" x10mm-2" x54mm

SR Equal Tee
Size: 8mm-66.7mm

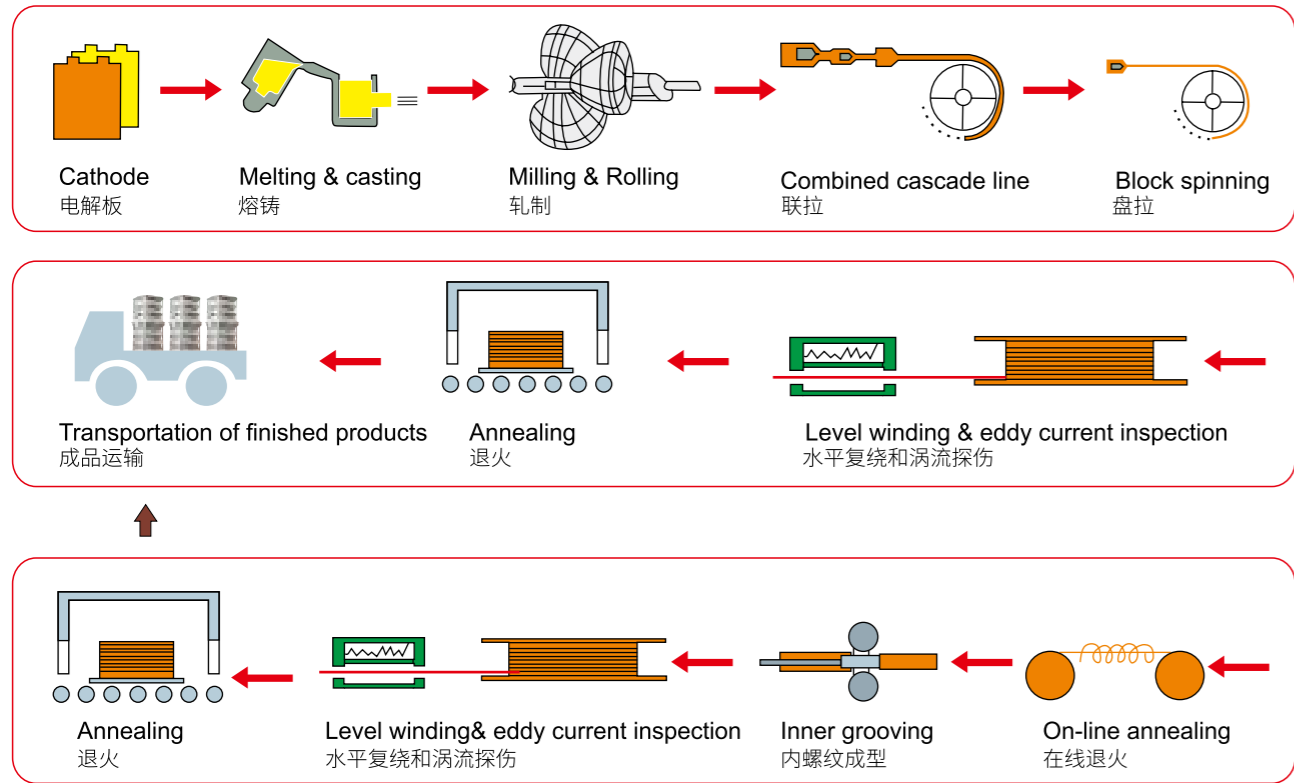
SR Reducing Coupling
Size: 8x6mm-67x54mm

SR Stop End
Size: 8mm-54mm

SR Bent Tap Connector
Size: 15mmx1/2"-22mmx3/4"



铜管生产流程 PRODUCTION PROCESS OF COPPER TUBE



标准参考及化学成分 STANDARD REFERENCE & MAIN CHEMICAL COMPOSITION

Material 主要化学	GB	ASTM	BSEN	JIS	Main Chemical Composition 主要化学成分(%)
Pure Copper 纯铜	T ₂	C11000	C101, C102	C1100	Cu+Ag≥99.90
Phosphorus 磷铜	TP ₁	C12000	--	C1201	Cu+Ag≥99.90 P: 0.004~0.012
Deoxidized Copper 脱氧铜	TP ₂	C12200	C106	C1220	Cu+Ag≥99.90 P: 0.015~0.040

机械性能 MECHANICAL PROPERTIES

Standard 标准	Product 产品	Alloy 牌号	Temper 状态	Tensile Strength 拉伸强度(MPa)	Yield Strength 抗压强度(MPa)	Elongation 延伸率(%)	Hardness 硬度(HV/HR)	Grain Size 晶粒度(MM)
JIS H3300	Coil, straight tube 盘管, 直管	C1020	O	≥205	--	≥40	HR15T:≤60	0.025~0.06
			OL	≥205	--	≥40	HR15T:≤65	≤0.040
			1/2H	245~325	--	--	HT30T:30~60	--
			H	≥315	--	--	HT30T:30≥55	--
		C1100	O	≥205	--	≥40	--	--
			1/2H	245~325	--	--	HT30T:30~60	--
			H	≥275	--	--	HRF≥80	--
			1/2H	245~325	--	--	HT30T:30~60	--
		C1201	O	≥205	--	≥40	HR15T:≤60	0.025~0.06
			OL	≥205	--	≥40	HR15T:≤65	≤0.040
			1/2H	245~325	--	--	HT30T:30~60	--
			H	≥315	--	--	HR30T≥55	--
ASTM B360	Capillary 毛细管	C12000 C12200	H80	≥310	--	--	--	
			--	--	--	--		
GB/T1531	Capillary 毛细管	TP1 TP2	T2	≥345	--	--	--	
			(Y ₂)	245~370	--	--	--	
			(M)	≥205	--	≥35	--	
GB/T20928	Inner-grooved tube 内螺纹管	TP2	(M ₂)	215~270	--	≥43	--	0.015~0.035
ASTM B280	Coil, straight tube 盘管, 直管	C12200	60	≥205	--	≥40	--	0.035
			H58	≥250	--	--	--	
ASTM B68	Coil, straight tube 盘管, 直管	C10200 C12000 C12200	50	≥210	--	≥40	--	0.015~0.040
			60	≥205	--	≥40	--	
			60	≥210	--	≥40	--	
ASTM B75	Coil, straight tube 盘管, 直管	C10100 C10200 C12000 C12200	H58	≥205	≥205	--	HT30T:≥30	--
			H80	≥310	≥275	--	HR15T:≥55	--
			60	≥205	≥62	--	HR15T:≤60; HRF≤50	≥0.040
			50	≥205	≥62	--	HR15T:≤65; HRF≤55	≤0.040
ASTM B743	Coil 盘管	C10200 C12000 C12200	H58	≥250	≥205	--	HR30T:≥30	--
			60	≥205	≥62	≥40	HR15T:≤60; HRF≤50	≥0.040
			50	≥205	≥62	≥40	HR15T:≤65; HRF≤55	≤0.040
GB/T17791	Coil, straight tube, pancake coil 盘管, 直管, 蚊香管	T ₂	(Y)	≥275	--	--	--	--
			(Y ₂)	245~325	--	--	--	
			(M ₂)	≥205	--	≥40	--	≤0.040
			(M)	≥205	--	≥40	--	0.025~0.06
			TU ₁	(Y)	≥315	--	--	--
			TU ₂	(Y ₂)	245~325	--	--	--
			TP ₁	(M)	≥205	--	≥40	--
BS EN 12735-1	Coil, straight tube 盘管, 直管	CW024A	R220	≥220	--	≥40	HV5:40~70	--
			R250	≥250	--	≥30	HV5:75~100	--
			R290	≥250	--	≥30	HV5:≥100	--



水平连铸炉 Horizontal continuous casting furnace



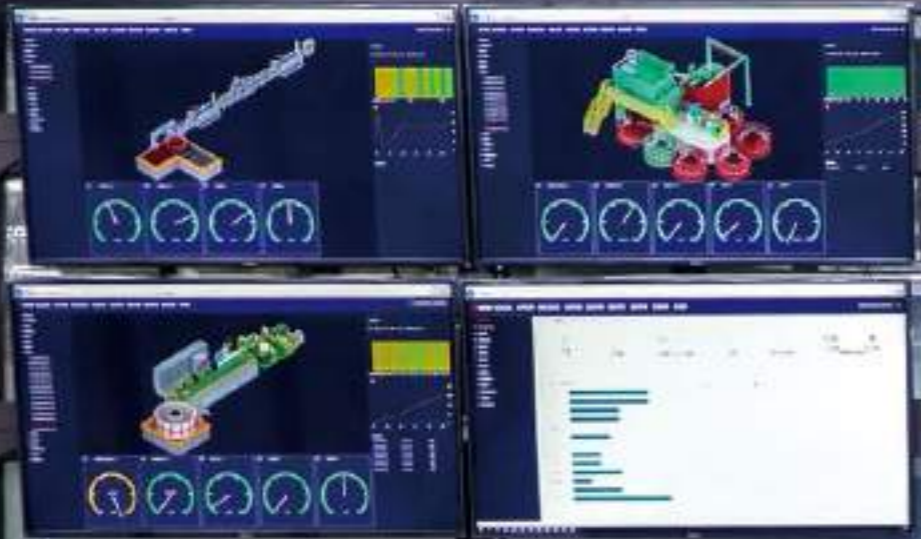
空心铸锭 Hollow billet



铣面机 Face milling machine-copper tube



联拉机 Combined drawing machine



生产实力 PRODUCTION STRENGTH

通过自动化升级和 SCADA、MES、RFID、EMS、WMS 等多系统融合应用，建设数字化工厂，推进智能制造。
By automation upgrading of equipments and multi-systems fusion application of SCADA、MES、RFID、EMS、WMS etc., Jintian is building digitalized factory, and promoting intelligent manufacturing.



盘拉机 Pulling machine



内螺纹成型机 Internal thread forming machine



复绕机 Rewinding machine



蚊香盘成型机 Mosquito coil forming machine



退火炉 Annealing furnace



智能仓库 Smart warehouse

质量管理 & 品质保证

QUALITY CONTROL & GUARANTEE FOR ACR COPPER TUBE



Composition analysis for cathode copper
阴极铜元素分析

High-speed analysis for copper liquid
炉前成分分析

Smooth shell demension measurement
铜管表面检查

Smooth tube defects test in line
外表缺陷在线涡流探伤

Grain size test for finished tube
晶粒度测试

Cleanness determination for finished tube
清洁度测试

Mechanics properties test for finished products
终端产品性能测试

Defects test for heat transfer of high efficiency tube
高效热传导测试

荣誉证书



Keep meliorating in the production. Quality is above all. The specialized QC department, the professional test center, the advanced test equipment, etc. have provided jintian Group with a scientific & perfect QC system. Jintian Group has been ISO 9001:2000 certified for quality and ISO14001:2004 certified for environment protection, furthermore, has attained international approvals including JIS, UL, ASTM, EN, TUV certifications.

不断改进产品质量，推行质量第一理念。公司成立专业质检部门，建立起专业检测中心，引进先进的检测设备，完善科学检测体系。先后获得 ISO 9001:2000 国际质量体系认证，ISO 14001:2008 环境管理体系认证，通过 JIS, UL, ASTM, EN, TUV 等认证。

主要的检验项目及仪器表

PRIMARY TESTING ITEMS AND EQUIPMENT TABLE

Serial number 序号	Testing Items 检测项目	Name of the main testing equipment 主要检测仪器名称	Type/producing region 品牌
01	Electrolytic Copper Chemical Composition 电解铜化学成分检测	DC arc spectrometer 直流电弧光谱仪测	Ha-12/U.S.BAIRD Ha-12/美国 BAIRD
02	Copper tube chemical composition 铜管化学成分检测	Electrospark Spetrometer 电火花光谱仪	Dv-5/U.S.BAIRD Dv-5/美国 BAIRD
03	Copper tube defects 铜管缺陷检测	Eddy Current Inspection 涡流探伤仪 (在线探伤)	GERMANY db GERMANY foerster 德国DB 德国 FOERSTER
04	Oxygen content 含氧量检测	Infrared Oxygen Sensor 红外测氧仪	Ro-416/U .S. LECD RO-416/美国 LECD
05	Copper tube inner face 铜管内壁检测	Chloride Ion Chromato-graph 氯离子量离子色谱仪	Dx-120/U.S.DIONEX Dx-120/美国 DIONEX
06	Grain size 晶粒度、螺纹齿形检测	Metallographic Microscope 金相显微镜	06CK-40M/Japan Aolinbasai 06CK-40M/ 日本 Aolinbasai
07	The Internal profile 内螺纹检测	Image Mapping Table 图像映射表	SOV-2010/CHINA SOV-2010/中国
08	Computer electronic mechanical properties 机械性能微机电子检测	Ultrasonic Cleaning Machine 万能实验机 超声波清洗仪	CMT4504/CHINA TP2000/CHINA CMT4504/中国 TP2000/中国
09	Cleanness 清洁度	Electronic Scales 电子天平 (0.01毫克)	BP211 D/GERMANY BP211D/德国
10		Oil content analyzer 油分测定仪	
11		Refrigerator system water testing machine 冰箱系统测水仪	
12		Vickers Sclerometer 维氏硬度计	

包装 / ACR TUBE PACKING

LWC 水平复绕盘管



Pancake Coil 蚊香盘管



Straight Tube 直管



全球销售网络 / GLOBAL SALES NETWORK



部分战略合作伙伴 HONOR PARTNER

